

6-Step Design Process

1.



DEFINE THE CHALLENGE

Articulate the impact you aim for. Look at challenge as a question.

2.



BIOLOGIZE FUNCTION AND CONTEXT

Analyze the essential functions and context. Reframe them in Biological terms.

3.



DISCOVER BIOLOGICAL STRATEGIES

Look for natural models that address your design challenges. Identify the strategies used.

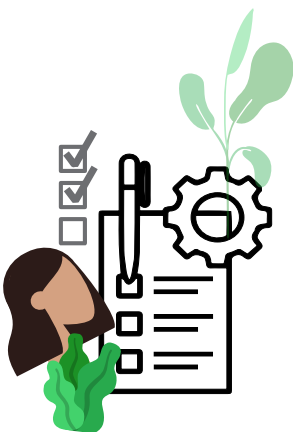
4.



ABSTRACT DESIGN STRATEGIES

Translate biological strategies to design principles. Make them free of biological jargon, then refine to produce a viable solution.

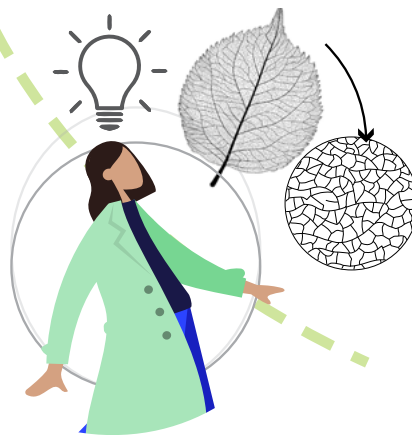
6.



EVALUATE FIT AND FUNCTION

Assess the design concept. Review technical and business model feasibility then refine to produce a viable solution.

5.



EMULATE NATURE'S LESSONS

Identify patterns and relationships among the strategies you found and develop design concepts based on these elements.

ITERATIVE PROCESS